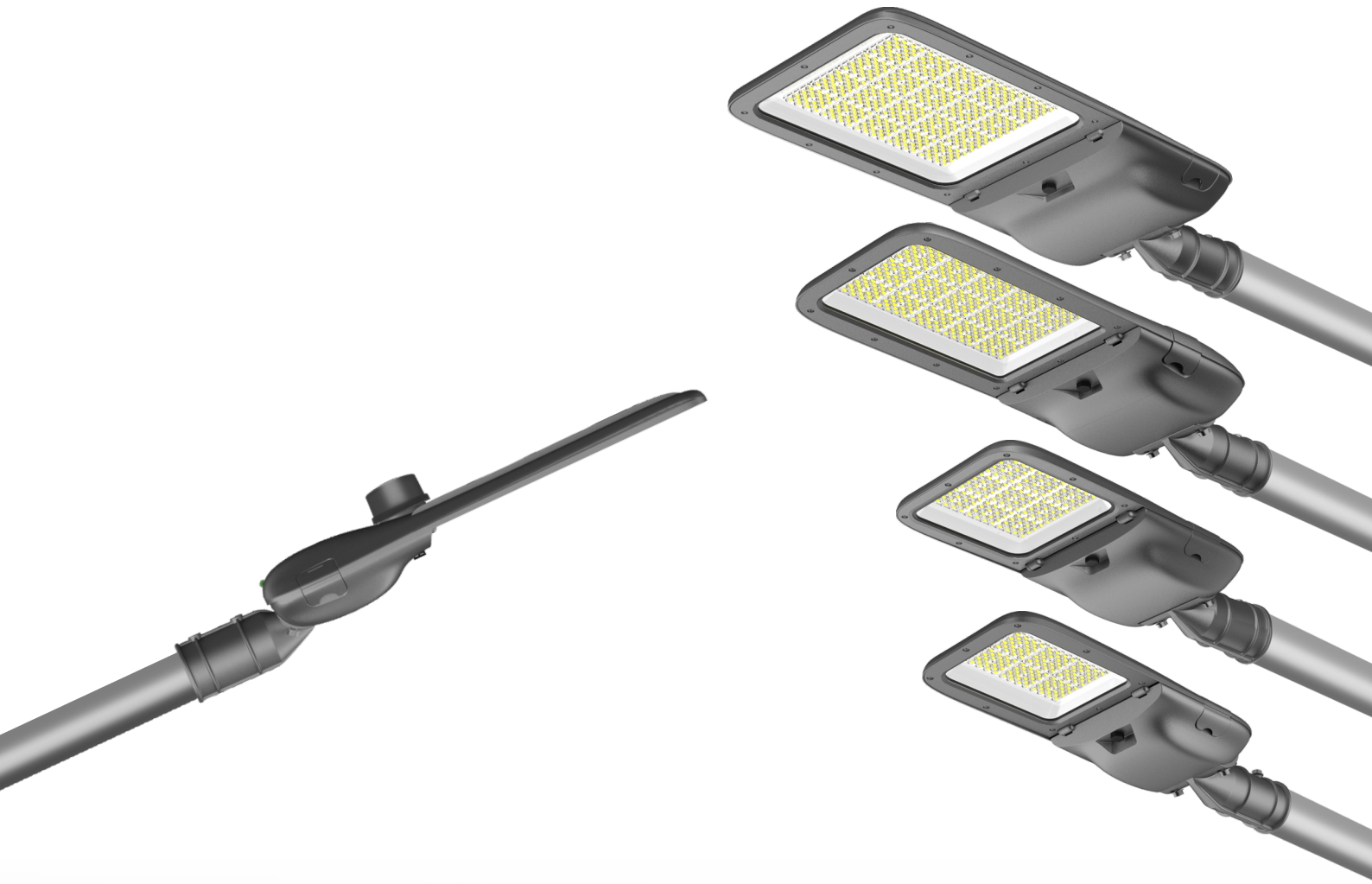


Butterfly<sup>®</sup>  
**LED LIGHTS**  
The Future of Lighting

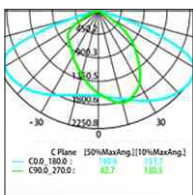
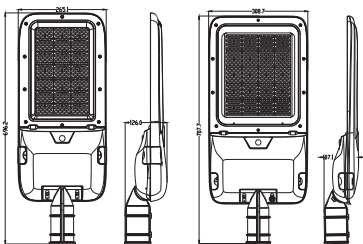
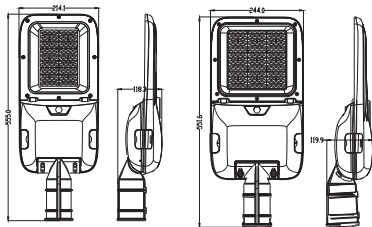
30W - 240W



# Butterfly Fusion X

SMART LED ROAD LIGHT SERIES





Dist (M)	Enadir (lx)
10m	1.000
11m	0.826
12m	0.694
13m	0.592
14m	0.510



## Technical Specifications

### Electrical Characteristics

Wattage	60W	90W	120W	150W	180W
	<i>Other wattages also available ranging from 35W to 240W</i>				
LED Driver	<b>Vossloh Schuebe ComfortLine Prog S-1-10 V 100 V/</b> Philips Xitanium-100W/150W-0.7A-230V-Y / SUNCOME HVC-150-56				
LED Driver Type	Constant Current Programmable LED Driver / Constant Current LED Driver				
Voltage Range	<b>100V - 277V</b> 50/60HZ				
Power Factor	>0.95 (nominal power)				
Drive Current	100mA - 700mA				
Surge Protection	<b>10KV / 20KV</b> Dedicate SPD				

### Light Technical Characteristics

Lumen Package (Lm)	>8,400	>12,600	>16,800	>21,000	>25,200
	<i>Other lumen packages also available ranging from 4,900 Lm to 35,000Lm</i>				
System Efficacy	<b>&gt;155 Lm/W / &gt;140 Lm/W</b>				
Light Output Ratio (LOR)	>85%				
Light Source	<b>Lumileds Lexeon 3030 2D / TYF 3030</b>				
LED Efficiency	<b>&gt;200 Lm/W / &gt;175 Lm/W</b> (upto 220 Lm/W)				
Color Rendering Index	Minimum 70				
Beam Angle	Standard Beam Angle 90 x 150 Degree Type II M <i>(other Type(s) also available)</i>				
Color Temperature	CW -5700K/ NW -4000K/ WW -3000K ±500K				
Lifetime	<b>120,000 hours</b>				
Photometric Data	IES / LDT Photometric Data File are available				

### Environmental Characteristics

Installation	48-60mm pole, side entry			
Mounting Height (Ideally)	6-8m	8-10m	10-12m	10-14m
Working temperature	-40°C to 55°C			
Wind force	Up to 150 km/h			
Relative humidity	Up to 95%RH			

### Mechanical Parameters

Housing material	High pressure die-cast aluminum			
Gasket material	Heat resistant silicone rubber			
Glass	Tempered Glass			
Finishing	Corrosion resistant powder coating			
Dimensions (LxWxH) mm	555x214 x118	555x244 X118	696x265 X126	708x309 x107
Weight (Approx.)	4kg	5kg	7kg	9kg
Certifications	CE LVD & CE EMC			
Classifications	IP66 & IK08			

### Unique Features

Easy Maintenance	Tool-less opening of gear Compartment & Tool less LED Module replacement
Future Proof Design	Upgradable to solar or any other future technologies
NEMA Control	Optional Provision for 7 pin NEMA socket & other connected solutions.

<b>Applications</b>	Expressways, Highways, Major Roads, Secondary Roads, Industrial Roads & Residential Roads.
---------------------	--

Butterfly  
**Fusion X**

SMART LED ROAD LIGHT SERIES

**Butterfly**<sup>®</sup>  
**LED LIGHTS**  
The Future of Lighting